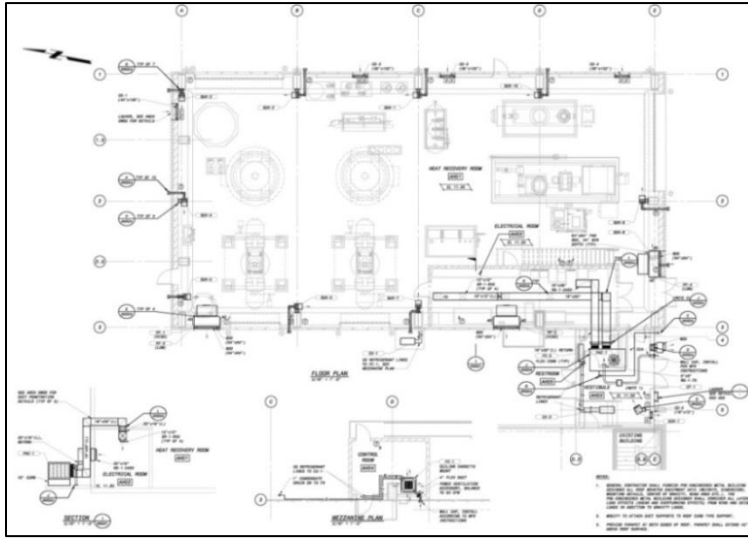


MDC Incinerator Upgrades & Heat Recovery Project

Hartford, CT



Above: Designs were made in accordance with the latest NEC, NFPA, ASHRAE, and State of Connecticut Building Codes

Client

Black & Veatch Corporation

Completed

2010 Design

Description

Zuvic Carr was engaged by Black & Veatch to assist with the design of the Metropolitan District (MDC) Hartford Water Pollution Control Facility incineration upgrades and heat recovery system.

Zuvic Carr performed detailed heating, ventilation, and air conditioning (HVAC) system and plumbing design for a new Dry Ash Truck Loading Building. Designs were made in accordance with the latest NEC, NFPA, ASHRAE, and State of Connecticut Building Codes.

Zuvic Carr also reviewed Contractor submittals during the construction phase in 2015.